

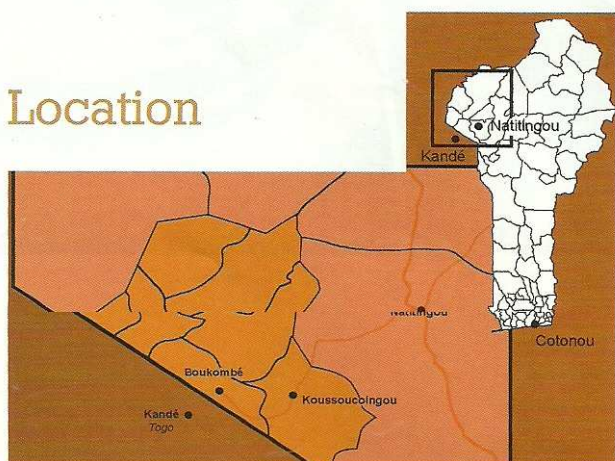
ART OF LIVING



DISCOVERY

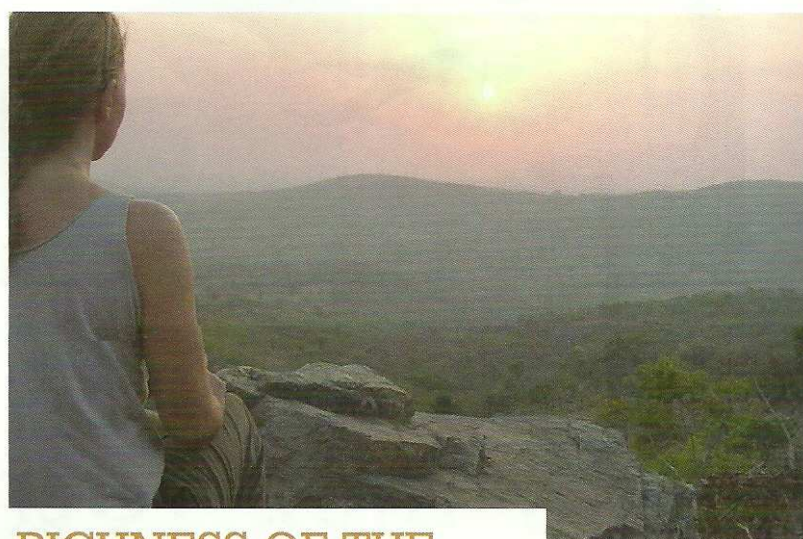
RICHNESS OF THE OTAMMARI LAND

Location



Located in the Atacora chain in North Western Benin, Koussoucoingou is found somewhere on the road towards Togo, between Natitingou and Boukoumbé. From Natitingou take the bumpy dirt road through fields and baobab trees leading to Koussoucoingou, one of the villages of the Otammari land. The Betammaribe people's favourite and traditional housing is the little fortified huts known as «Tata».

Nestled in the heart of the Atacora chain, the Koussoucoingou site offers breathtaking views and its gentle year-round micro-climate is very much appreciated.



RICHNESS OF THE OTAMMARI LAND

The village of Koussoucoingou is interesting in many aspects: vibrant culture and tradition, generous nature, varied landscapes, and breathtaking panoramas. Located some 570 metres above sea level, it overlooks the Boukoumbe plains and is a stopover that cannot be ignored by travellers in search of authenticity, calmness and rest.

In Koussoucoingou you will get the opportunity to visit the Kota falls, a wonder of nature, but also the Natitingou Museum of Traditions and Arts of the local tribes, renowned in the whole country for the quality of its collections.

This village is also the ideal starting point for visiting the Penjari Park or for crossing over to neighbouring Togo.

Local ecoguides from the village association known as «La Perle de l'Atacora» have devised many theme tours within the Otammari land.

They will welcome you warmly to the pavilions, the guides' office, the various starting points for trekking as well as the must see spots within the village.

FOR MORE INFORMATION AND BOOKING

La Perle de l'Atacora/Koussoucoingou Tél : (+229) 97 35 02 86 ou 90 10 98 56 ou 93 10 57 13 ou 90 02 92 32
Benin Ecotourism concern (Eco Benin ONG)
Abomey Calavi, route de l'ITA - Rue début de clôture IITA
03 BP 1667 Jéricho Bénin
(+229) 21 04 22 68 ou 90 09 57 46 ou 95 28 52 20
ecobenin@yahoo.fr contact@ecobenin.org www.ecobenin.org

LES CIRCUITS

TOUR#1 : THE OTAMMARI PEOPLE AND THE SECRET BEHIND TATA CONSTRUCTION

A two hour visit of the village in a bid to grab the lifestyle of the Betammaribe people and their exceptional know-how in designing and building TATAs: these litt

TOUR#2 : SAVANNAH AND CULTURE IN THE OTAMMARI LAND

This three hour walk will make you discover the hidden beauties of a little valley next to Koussoucingou: a lake women used to fetch water from, not to mention Ancestors' granaries, as well as Tatas scattered all over the Savannah.

TOUR#3 : RETRACING THE GERMAN COLONIAL ROUTE

Consisting mostly in a walk along a path known in colonial times as the first road suitable for motor vehicles in the Atacora region, this tour will make you relive the eventful moments of French and German colonisations as well as the peaceful resistance they met from the Betammaribe people.

TOUR#4 : GLOBAL VIEW OF THE ATACORA REGION

A 4-5 hour trekking from Koussoucingou to Boukoumbe through the kitchen gardens of Takouanta. You will discover everything there is to discover about the Atacora chain and the local people's seasonal activities. Let the breath of Harmattan stir your soul!

What to bring along : comfy trekking shoes, hat, shades, sun cream and mosquito repellents, water. For more information see the guides.

TATA ACCOMODATION

The members of the village association will be pleased to house you in their plainly furnished tatas. Sleeping out in the open on their terraces is also possible.

Price per person and per night: 3000 CFA Francs, 5000 CFA Francs per couple including taxes but excluding breakfast.

CATERING

Discover the local food (fonio dough, pounded yam, Fulani cheese) prepared by local women. Meals can be served inside the tatas or at "Chez Parfait", the local grocer's in the heart of the village. You can, at your request, take part in the preparation of your food.

Our tip: order your food two hours ahead

Price per person: 2000 CFA Francs

